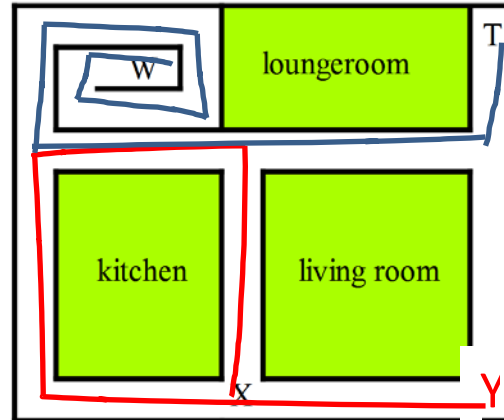


Interpret and follow directions

A computer game designer is using the graphic below.



The letter X represents a person. It will move according to the following instructions.

- Move vertically to the end of the passage and turn left
- Take the next two left hand turns and stop at the end of the passage
- Change the letter into a letter Y.

1. On the diagram write where the Y will be.
2. Starting from the top right of the graphic draw the shortest route to letter W.
3. The letter T represents a teddy-bear. Describe, from the point of view of the teddy-bear, how to travel from the letter T to the letter W, taking the shortest route.

From T, travel downwards and turn take the first passage on your left. Continue to the end of the passage and then turn right. Continue to turn right at the end of each passage. After six more right turns you will reach the W.