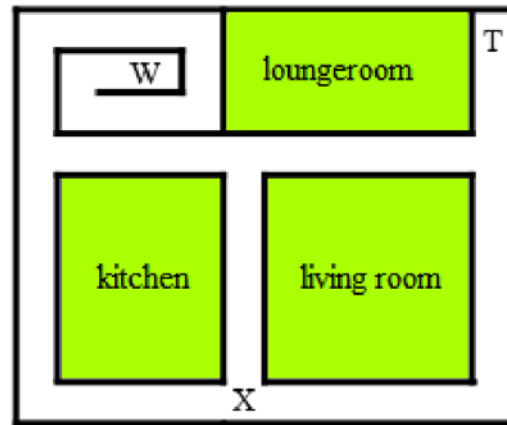


Interpret and follow directions

A computer game designer is using the graphic below.



The letter X represents a person. It will move according to the following instructions.

- Move vertically to the end of the passage and turn left
- Take the next two left hand turns and stop at the end of the passage
- Change the letter into a letter Y.

1. On the diagram write where the Y will be.
2. Starting from the top right of the graphic draw the shortest route to letter W.
3. The letter T represents a teddy-bear. Describe, from the point of view of the teddy-bear, how to travel from the letter T to the letter W, taking the shortest route.

Pointers:

1. Vertical movement is movement in an up and down direction.
2. Horizontal movement is movement in a left or right direction.
3. A route is the journey taken. The shortest route is the shortest journey.